

The Wild One™ Rollercoaster  
Obstacle Course

Congratulations on your purchase of the  
The Wild One™ Rollercoaster Obstacle Course.

*N-Flatables* knows that you'll get many hours of excitement from  
your new purchase. Please read this booklet carefully, being sure to read  
all of the safety precautions and the dos and don'ts of the ride.

Remember to stake (tether) the Wild One™ as described in the  
"Installation and Setup" booklet, and be sure to have a minimum of  
(1) trained operator as defined in the booklet.

Once again, we thank you for doing business with us, and call us if you  
have any questions.

Sincerely,  
*Cutting•Edge [BRAND]*



*N-Flatables*

2425 Enterprise Drive • Suite 600  
Mendota Heights, MN 55120 USA

Toll Free 1-800-811-7002 • Local 651-209-8600 • Fax 651-209-8630  
www.cuttingedgecreations.com

THE WILD ONE™ ROLLERCOASTER

H W L  
21' x 25' x 58'

#OBTC130101A The Wild One A-Module/C-Module (21'H x 11'W x 45'L). 1-Piece  
Unit includes: (1) 1 hp blower, (2) hole covers, (2) removable climbing surface/obstacle covers,  
(1) giant deflation zipper, tether kit: (2) top tethers, (4) bottom tethers, mattress reinforcement  
strips and carrying bag. Recommended load: (2) patrons over 42" tall, maximum height not to  
exceed 76" tall, 200 lbs. suggested maximum weight per patron.

N/A The Wild One Inner Loop. 1-Piece component requires: (1) 1 hp blower. This circular  
portion is connected between the A/C Modules.

#OBTC130101B The Wild One B-Module (6'H x 25'W x 12'6"L). 1-Piece Unit includes:  
(1) 1 hp blower, (1) giant deflation zipper, tether kit: (4) bottom tethers, mattress reinforcement  
strips and carrying bag. Recommended load: (2) patrons over 42" tall, maximum height not to  
exceed 76" tall, 200 lbs. suggested maximum weight per patronWARNING: B-Module can-  
not be used without the combination of the Wild One Rollercoaster A-, C- and  
D-Module Obstacle Course Units!

This Unit Requires Four Blowers to Function Properly.  
CEC Suggests the following Blower Types:

• Tool King™ Air Eagle High Volume Output..... 1.0-1.5 hp; 810 CFM

• Tool King™ Air Eagle High Volume Output  
with WATCHDOG™ built-in..... 1.0-1.5 hp; 810 CFM

All information included in this supplement is kept current and up-to-date.  
N-Flatables reserves the right to update this information  
from time to time as needed.

! Safety Notice !

All materials have been tested and comply to NFPA 701 Large Scale Test.  
All units meet the requirements under ASTM F 698-94, ASTM F 770-93 and  
ASTM 2374-06 .Safety and Maintenance Manuals are included with this unit.  
Minimum CFM requirement for this inflatable is 810 CFM .

Recommended  
Number of  
Installers

3-4

Number  
of  
Operators

1

Maximum  
Number of  
Passengers

4

Suggested Max  
Weight per Patron  
200 lbs.

Total Patron  
Weight  
800 lbs.

Use Whistle for Control

Minimum  
& Maximum  
Height

76" Max.  
42" Min.

No. of Stakes  
& Minimum  
Stake Length

(10) 40" Long

Indoor  
Weight  
Container  
Anchors

(10) 1,500 lbs.

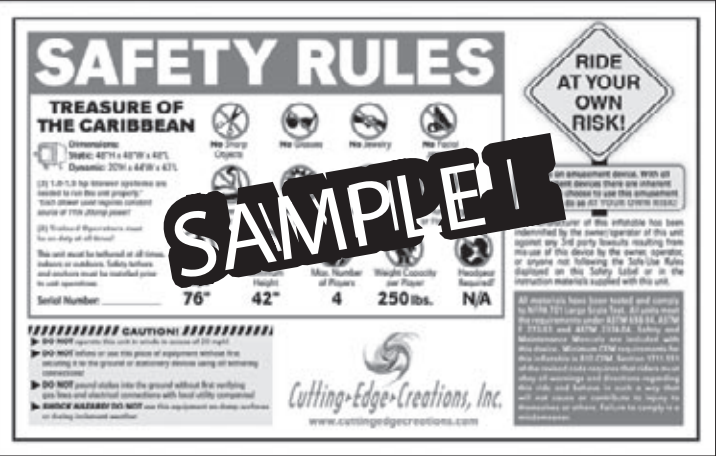
Outdoor  
Hard-  
Surface  
Anchors\*

(10) 2,500 lbs.

\* All outdoor weight containersMAY NOT comply with all state or  
municipal tethering requirements for inflatable devices.

! ALWAYS contact the utility company !

before pounding stakes into the ground!



SAMPLE WARNING LABEL

A Warning Label is placed on every inflatable that Cutting Edge  
Creations produces. The image shown above is only æsample of  
the Warning Label found on the side of your inflatable, and may not  
represent the information pertinent to the safety of this particular unit.

! Please instruct  
all participants to follow  
Safety Procedures!

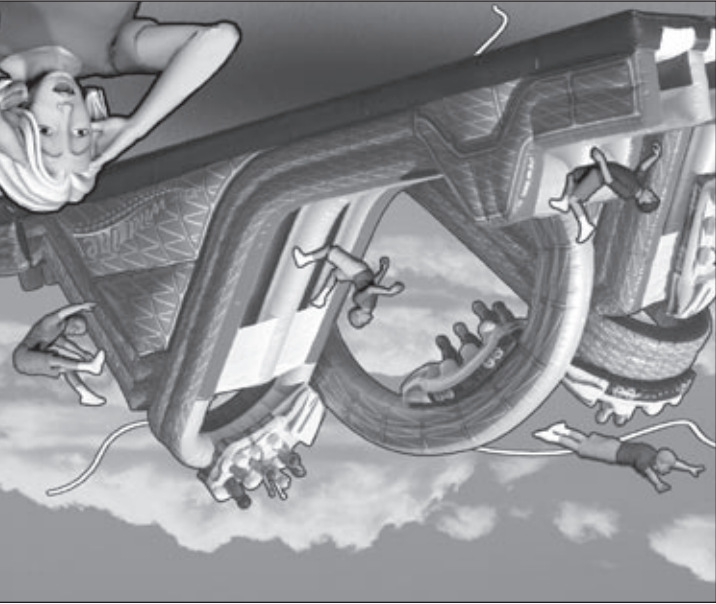
See next page➔

The Wild One™ Rollercoaster  
Obstacle Course  
Unit #08ST130101

*Cutting•Edge•Creation*

Supplement Manual v12.07 © 2007 Cutting•Edge•Creatio

The correct procedures for  
installing and operating  
of the Wild One™



Catastrophe!  
This type of catastrophe can always be avoided by proper tethering,  
utilizing 40" long ground stakes, and by having trained operators on  
duty and avoiding inclement weather (such as high winds i.e. winds in  
excess of 20 m.p.h.).

Directions Continued on Backside...

NEVER LEAVE THIS RIDE UNATTENDED!

- Read instruction booklet.
- Remove unit from storage bag.
- Position on a level ground area approximately 31' x 64'.
- Install ground stakes, at least (10) around perimeter.
- Loosely tie the tethers to ground stakes.
- Attach (4) blowers to tubes, making sure Velcro strap is firmly secure.
- Close zippers & flaps on all locations of unit and make sure they are secure.
- Connect each blower to its own power sourcekeep in mind that each blower used will require a constant supply of 110-volt, 20-amp power.
- Turn blower system on and guide the unit until it is fully inflated.
- Secure all tethers after the unit is fully inflated.
- Do a safety check of blowers, slide & climb covers.
- Do not operate this unit in winds in excess of 20 mph.

General Lacing Procedure:

- Use 3/8" bungee cord (supplied).
- Use interlocking carabiners to join laced sections together.

NOTE: The STANDARD SET-UP of this device is the only approved use of this inflatable device for the State Of New Jersey under the Type Certification applied for.

KEY TO DIAGRAM

- T = Top Tether
- B = Bottom Tether
- ENT = Entrance
- EXIT = Exit
- EVACUATION
- BL = Blower
- ZIP = Deflation Zipper
- OP = Operator Position

Static Dimensions (in bag)

Dynamic Dimensions (inflated)

THE WILD ONE

THREE SET-UP OPTIONS AVAILABLE!

TWO UNITS  
END-TO-END

SIDE VIEW

ZIPPERS ARE  
LOCATED ON  
BOTH SIDES  
OF INFLATED  
ROLLERCOASTER  
CARS

OPTION 1 : STANDARD SET-UP

SECTION D ATTACHES TO D-RINGS OF A AND C.

OPTION 2: SINGLE UNIT SET-UP

POSITION STAKES ABOUT 3' FROM INFLATABLE .  
A & C UNITS SHOWN ABOVE CAN BE SPLIT INTO INDEPENDENT UNITS  
SECTION B CANNOT BE USED WITHOUT A & B. ALTERNATIVELY, A & C UNITS  
CAN BE FASTENED END TO END LENGTHWISE.



**Improper use of this inflatable may cause serious injury!**

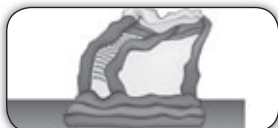
Operator Take Control...  
**Use Whistle!**



### Evacuation Procedures!

The blower tube has an automatic air flap that reduces the loss of air if the blower system goes off. In the event of a power outage or emergency take-down, direct patrons off the inflatable as shown by arrows in the diagram shown above.

**Make sure all operators understand the proper procedures for using this inflatable, and that passengers must follow the rules.**



### Deflation Rate

Without blower support, average deflation time to an unsafe structure is 5-7 minutes.



### Avoid Contact with Others!

Passengers must be instructed to use or ride unit individually. Do NOT allow double-riding, as accidents WILL happen!



### Do Not Hit Your Head!

DO NOT dive or enter unit head first, as head or neck injuries may occur!



### Keep Landing Areas Clear!

Operators should not allow participants to land on one another. Accidents WILL happen!



### Instruct Safety!

Instruct riders to follow the safety rules located on entrance side of unit. NO flipping or jumping, as injuries may occur!



### Watch Out for High Temps!

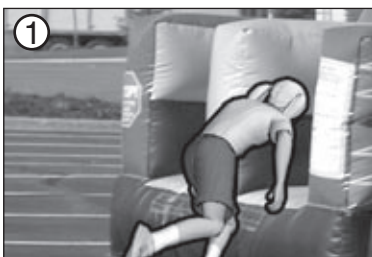
DO NOT operate when temperatures exceed 90-degrees. Watch for early signs of heat exhaustion and for dehydration.

## Important!

### Use and Indemnification:

"Buyer" (person, company or entity purchasing the inflatable product or device), is solely responsible for the manner of use of the products and other equipment purchased from Cutting Edge Creations, Inc. "Buyer" is solely responsible for all signage, labels and warnings to consumers or other users of the products and equipment, and for any and all other acts necessary, including user warnings and limitations (e.g., weight, height, age, number of participants and medical condition limitations), to ensure the safety of the users. "Buyer" acknowledges that they have received, read and fully understand all necessary instructions for the safe setup and operation of their Cutting Edge Creations, Inc. inflatable product or device. "Buyer" agrees to operate their Cutting Edge Creations, Inc. inflatable product or device according to the instructions established by Cutting Edge Creations, Inc.. "Buyer" agrees to operate their inflatable product or device according to all state and local requirements. "Buyer" agrees to train any person(s) operating the inflatable product or device in the safe operation of the inflatable product or device including safe handling of emergency situations. "Buyer" shall use proper stakes, tie-downs, and other applicable devices necessary to ensure the safety of users and the general public. "Buyer" agrees to indemnify, defend and hold harmless Cutting Edge Creations, Inc. and Cutting Edge Creations, Inc. Insurers from actions and claims of third parties, including customers of "Buyer" and users of the goods and products sold to "Buyer", arising out of or in connection with the use of the goods and products herein described or resulting from the breach of the provisions in this Confirmation of Order by "Buyer". In the event Cutting Edge Creations, Inc. is required to commence an action to enforce this provision, "Buyer" shall pay all of Cutting Edge Creations, Inc. legal costs and expenses.

## Step by Step Procedure: The Wild One™ Obstacle Course



1. Enter The Wild One™ using one of the two entrances and move towards the climbing slope.



2. Climb up the first hill to the slide, using the safety handles!



3. With arms crossed, slide down the hill feet first.



4. Run through the tackle dummies.



5. Climb up the second hill, then with arms crossed again, slide down feet first.



6. Squeeze through the squeeze play.



7. Exit the unit with the help of the operator.



## DAILY INSPECTION CHECKLIST OF INFLATABLE

- ☐ Check to see if blower(s) is attached properly and securely to inflatable device.
- ☐ Make sure all deflation zippers are closed and secured.
- ☐ Check blower electric attachment to be sure it has been properly plugged in to receptacle.
- ☐ Make sure blower system has no obstruction restricting intake on sides of blower.
- ☐ Check inflation of unit to be sure it is properly inflated to correct firmness.
- ☐ Make adjustments to slide and climb covers if necessary to proper secure position.
- ☐ Make sure all tether points are attached properly.
- ☐ Check netted areas and sun covers to be sure they are in place and in good condition.
- ☐ Crawl through (if possible) inflated device and examine all visible seams for stretching or wear. If problems with any seams contact manufacturer to advise.

## SLIDE MAINTENANCE



### For Best Slide Maintenance Results, Apply Turtle Wax 2001 Vinyl Protector!

Apply spray to slide areas only to keep them slippery (new inflatables will need additional coverage). All units should be maintained every hour to keep the surface slippery.

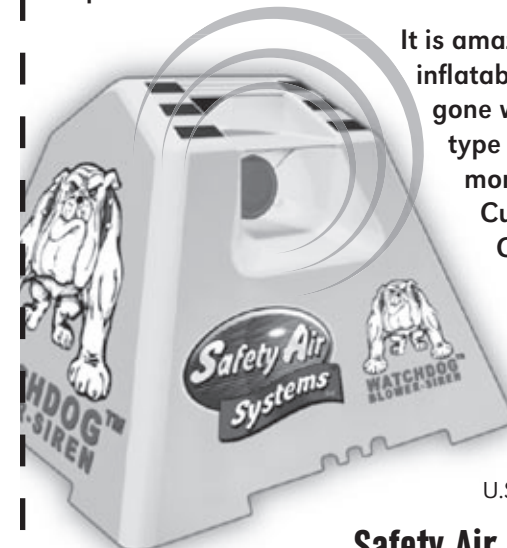


**! WARNING! !**  
Do not apply spray finish to any climbing, landing or positioning surfaces as accidents may occur.

ADVERTISEMENT

# WATCHDOG™ BLOWER-SIREN

The Watchdog™ blower siren is the future for safer operation of inflatable amusement rides.



It is amazing that the inflatable industry has gone without any type of device for monitoring inflation. Cutting Edge Creations, Inc., is a licensed provider of the Watchdog Blower Siren.

WATCHDOG™ pods are only available in 110v.

U.S. Patent #6,650,246



**Safety Air Systems, LLC**  
info@safetyairsystems.com  
www.safetyairsystems.com

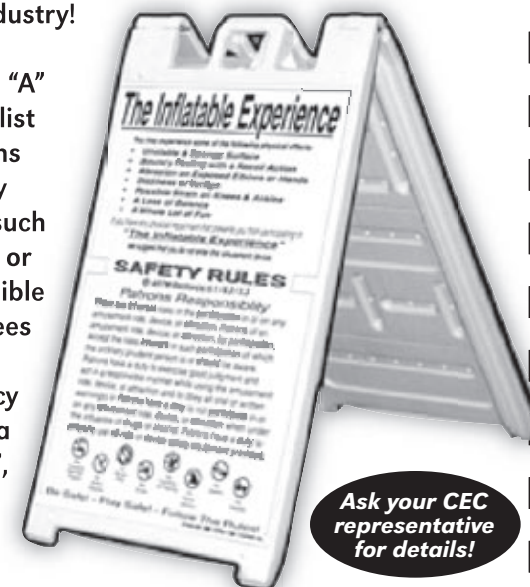
ADVERTISEMENT

ADVERTISEMENT

## Optional Safety sign: "The Inflatable Experience™"

Avoid such potential liability problems with this information board prepared especially for the inflatable industry!

This durable double-sided "A" framed sign list the sensations that one may experience, such as 'dizziness or vertigo, possible strain on knees and elbows' and 'a bouncy feeling with a recoil action', etc...



**Ask your CEC representative for details!**

ADVERTISEMENT